

Quick & Easy PILLOWCASE



The Red Boot Quilt Company



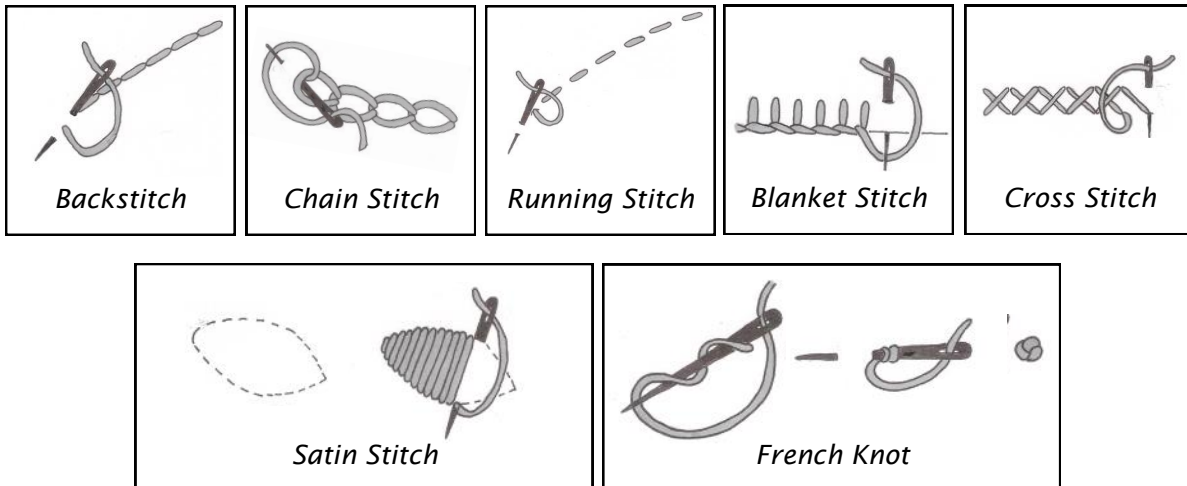
QUICK & EASY PILLOWCASE

Approx. Size 18in x 27 1/2in

This is a free pattern provided by
© The Red Boot Quilt Company 2018
STRICTLY NOT FOR RESALE OR DISTRIBUTION

BEFORE THE FUN BEGINS

- ◆ Please read all instructions before you begin.
- ◆ Abbreviations. "WOF" = 'width of the fabric'.
- ◆ Are you new to patchwork & quilting? There are many fantastic classes being run at your local patchwork and quilting store. You can also find fantastic step-by-step tutorials on the internet that will help you get started. This pattern is not intended to replace a class.
- ◆ **Requirements are based on fabric 115cm (44in) wide unless otherwise stated. Fabric requirements may differ from person to person due to cutting methods. If in doubt it is a good idea to purchase a little extra fabric.**
- ◆ Fusible webbing requirements will vary greatly between products and projects; assume you will need a lot and go from there!
- ◆ 1/4in seam allowances are used throughout unless otherwise stated.
- ◆ Pre-washed 100% cotton fabrics are recommended.
- ◆ Press all seams towards the darker fabric or in the direction that creates the least bulk.
- ◆ Please refer to the photo of the project and the quilt diagrams to help with colour choices and layout.
- ◆ **I would recommend using an applique mat with all but the most simple applique shapes.**
- ◆ Our patterns are proof-read and made by our lovely testers but sometimes mistakes do slip by us. Please let us know if you come across an error so we can correct it.
- ◆ **Buttons and beads are NOT suitable for children under three (3) years of age due to them being a choking hazard. Please replace buttons and beads with applique or embroidery.**



This design and its instructions, diagrams and templates are protected by copyright. They may not be reproduced by any process. If the project is being made by a group of crafters, each person is required to have purchased their own copy of the pattern. The instructions and information contained in this pattern is given in good faith, but no guarantee is given due to the fact we have no control over the techniques and materials used.

© The Red Boot Quilt Company 2018.

© Antonie Alexander, The Red Boot Quilt Company 2018
Website: www.theredbootquiltcompany.com ★ Email: redbootquilts@bigpond.com
Phone: (61) 7 3325 0172

QUICK & EASY PILLOWCASE

What You Will Need

- ◆ 1m (1 1/8 yards) of fabric for the main body of the pillowcase
- ◆ (1) fat quarter of contrasting fabric for the top of the pillowcase
- ◆ (1) 1 1/2in x 18 1/2in strip of contrasting fabric for the trim
- ◆ General sewing supplies

Cutting Instructions

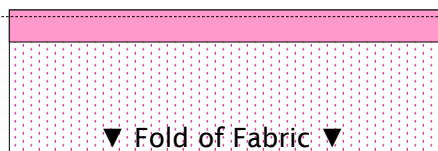
1. **From the fabric you have chosen for the body of the pillowcase, cut:**
 - ◆ (2) strips 18 1/2in x WOF. Crosscut -
 - (1) 18 1/2in x 21 1/2in rectangle, and
 - (1) 18 1/2in x 35 1/2in rectangle.
2. **From the contrasting fat quarter, cut:**
 - ◆ (1) 14in x 18 1/2in rectangle

How to Make the Pillowcase

1. Press a 1/4in double hem to one short edge of the 18 1/2in x 35 1/2in piece of fabric. Topstitch it in place using matching thread. Press well, then set it aside.
2. Iron the 14in x 18 1/2in contrasting piece of fabric in half lengthwise with wrong sides faces.
3. Iron the 1 1/2in x 18 1/2in piece of fabric in half lengthwise with wrong sides facing. Baste it to the folded rectangle of fabric from Step 2, matching raw edges to raw edges. Press well.

Diagram 1 ▶

▼ Match the Raw Edges ▼

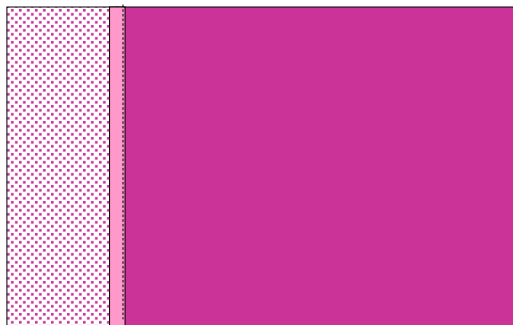
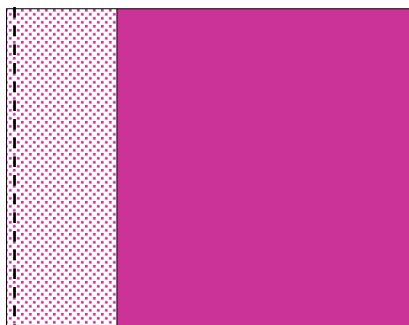


▼ Fold of Fabric ▼

4. Pin and then sew the top of the pillowcase to the 18 1/2in x 21 1/2in piece of fabric with right sides facing. Press the seam towards the larger piece of fabric.

Topstitch 1/4in from the folded edge of the contrast fabric to neaten. You can add a decorative stitch or finish to this edge instead of plain straight stitching. Blanket stitch, sewn by hand using a thicker thread than usual, gives a very pretty finish. This is the front of the pillowcase.

Diagram 2 ▼



TIP

I would highly recommend you finish the raw seams of the pillowcase using a zig-zag stitch on your sewing machine or a locking stitch on your Serger.

TIP

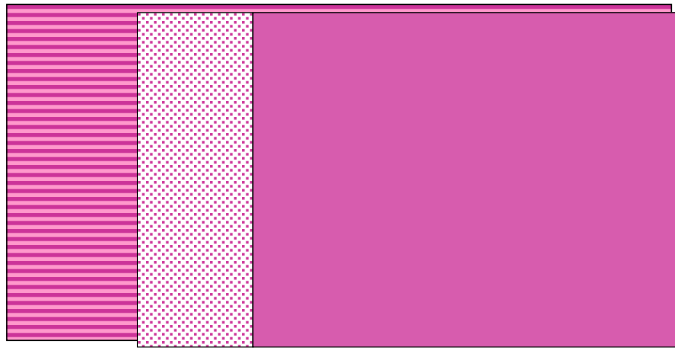
This pillowcase is large. Pillows come in so many shapes and sizes—flat, fluffy, and fat. You may have to adjust the size to fit your pillow.

TIP

Replace the fabric trim with lace, ric-rac, or a crocheted edge for a different look!

5. Place the 18 1/2in x 35 1/2in piece of hemmed fabric from Step 1 right side up on your work surface. Place the front of the pillowcase on top with the right side facing down. Ensure the unhemmed bottom edges are aligned—the bottom of the pillowcase is larger than the top.

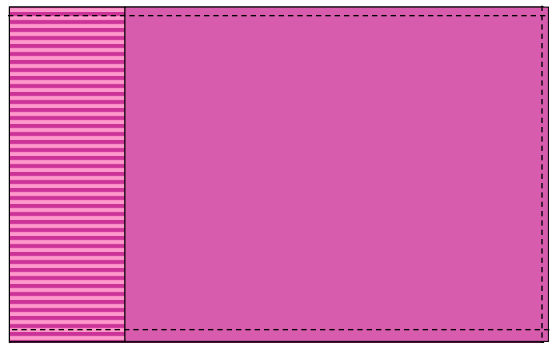
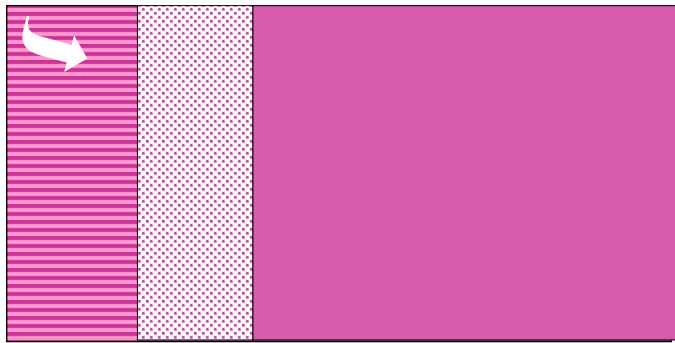
Diagram 3 ▼



◀ Align the unhemmed bottom edges.

6. Fold the extra fabric, the bit that is sticking out at the top of pillowcase, down and over the front of the pillowcase to cover the contrast fabric. This forms the pocket of the pillowcase. Pin and then sew the pillowcase together, sewing around three sides, leaving the top folded edge open. Turn the pillowcase right side out, then press well. Insert your pillow to finish.

Diagram 4 ▼



Make an Appliqued Pillowcase to Match Your Favourite Quilt

- Use your favourite applique method to decorate the pillowcase to match the quilt you are making.
- At Step 2, open the folded 14in x 18 1/2in rectangle of fabric so it is flat again. The ironed crease will show you where the centre fold of the fabric is situated.
- Applique your chosen shapes on one side of the centre line. Stitch around the shapes using your favourite method. Use soft-to-the-touch threads so they don't irritate your face when you are sleeping.
- Keep in mind the raw outside seams when you are positioning the applique on the pillowcase. If the shapes are placed too close to the raw edges, or to the centre fold of the fabric, the applique will be sewn into the seams.
- Fold the now appliqued piece of fabric in half lengthwise again, with the wrong sides facing. Press well, then continue at Step 3 to finish.

