

# SUMMER MRS CLAUS

## Templates Only



**The Red Boot Quilt Company**

## **BEFORE THE FUN BEGINS**

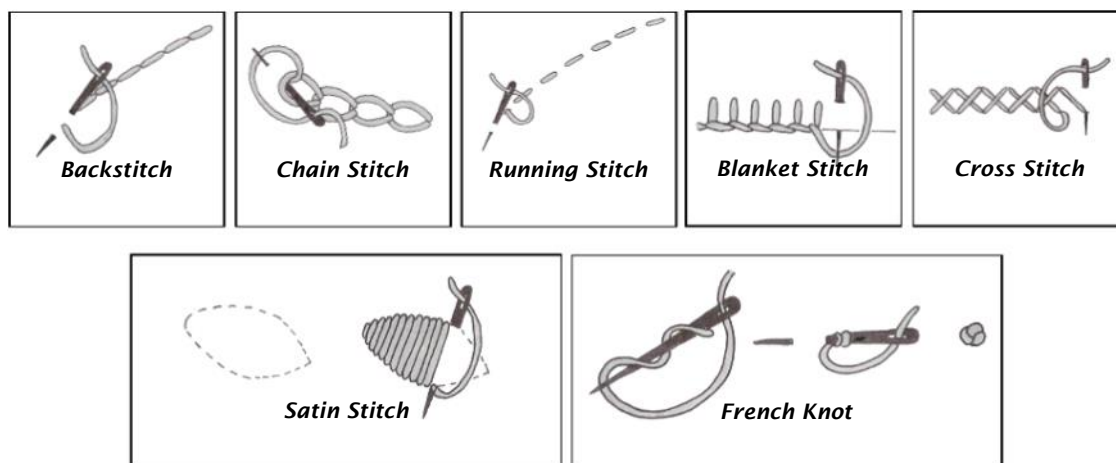
- ◆ Please read all instructions before you begin.
- ◆ Abbreviations. "WOF" = 'width of the fabric'.
- ◆ **Requirements are based on fabric 115cm (44in) wide unless otherwise stated. Fabric requirements may differ from person to person due to cutting methods. If in doubt it is a good idea to purchase a little extra fabric.**
- ◆ Fusible webbing requirements will vary greatly between products and projects; assume you will need a lot and go from there!
- ◆ 1/4in seam allowances are used throughout unless otherwise stated.
- ◆ Pre-washed 100% cotton fabrics are recommended.
- ◆ Please refer to the photo of the project and the quilt diagrams to help with colour choices and layout.
- ◆ **I would recommend using an appliqué mat with all but the most simple appliqué shapes.**
- ◆ Our patterns are proof-read and made by our lovely testers but sometimes mistakes do slip by us. Please let us know if you come across an error so we can correct it.
- ◆ This design and its instructions, diagrams, and templates are protected by copyright. They may not be reproduced by any process. The instructions and information contained in this pattern are given in good faith, but no guarantee is given due to the fact we have no control over the techniques and materials used. This pattern is not intended to replace a class.

### **A NOTE ABOUT BUTTONS**

- ◆ I like to use buttons on my projects but they aren't suitable for children under three (3) years of age due to them being a choking hazard. Replace buttons with appliqué or embroidery when you are making the project.
- ◆ Safety eyes are available from all good craft stores. Always follow the manufacturer's instructions.

### **IMPORTANT! HOW TO PRINT TEMPLATES FROM PDF PATTERNS**

- ◆ All templates are provided at their full size. Ensure your printer is set to print at 100% and deselect the scaling and cropping options. Ensure you deselect the option that says "print to printer margins".
- ◆ Some templates may be divided into two or more sections and will need to be joined to make the complete template. Simply match the shapes along the dashed or dotted lines as marked on the template, then use adhesive tape to stick them together. Occasionally a shape will distort a tiny bit in the printing process, simply adjust where necessary.
- ◆ All of our patterns are test printed multiple times before release. Very occasionally a PDF template will print with a **black background** due to differences between the various apps and devices we use. This can be solved in most instances by saving the PDF to your hard-drive, then re-opening the file using a PDF reader (not your browser). Please message me at [redbootquilts@bigpond.com](mailto:redbootquilts@bigpond.com) if you continue to have difficulties.



## SUMMER MRS CLAUS

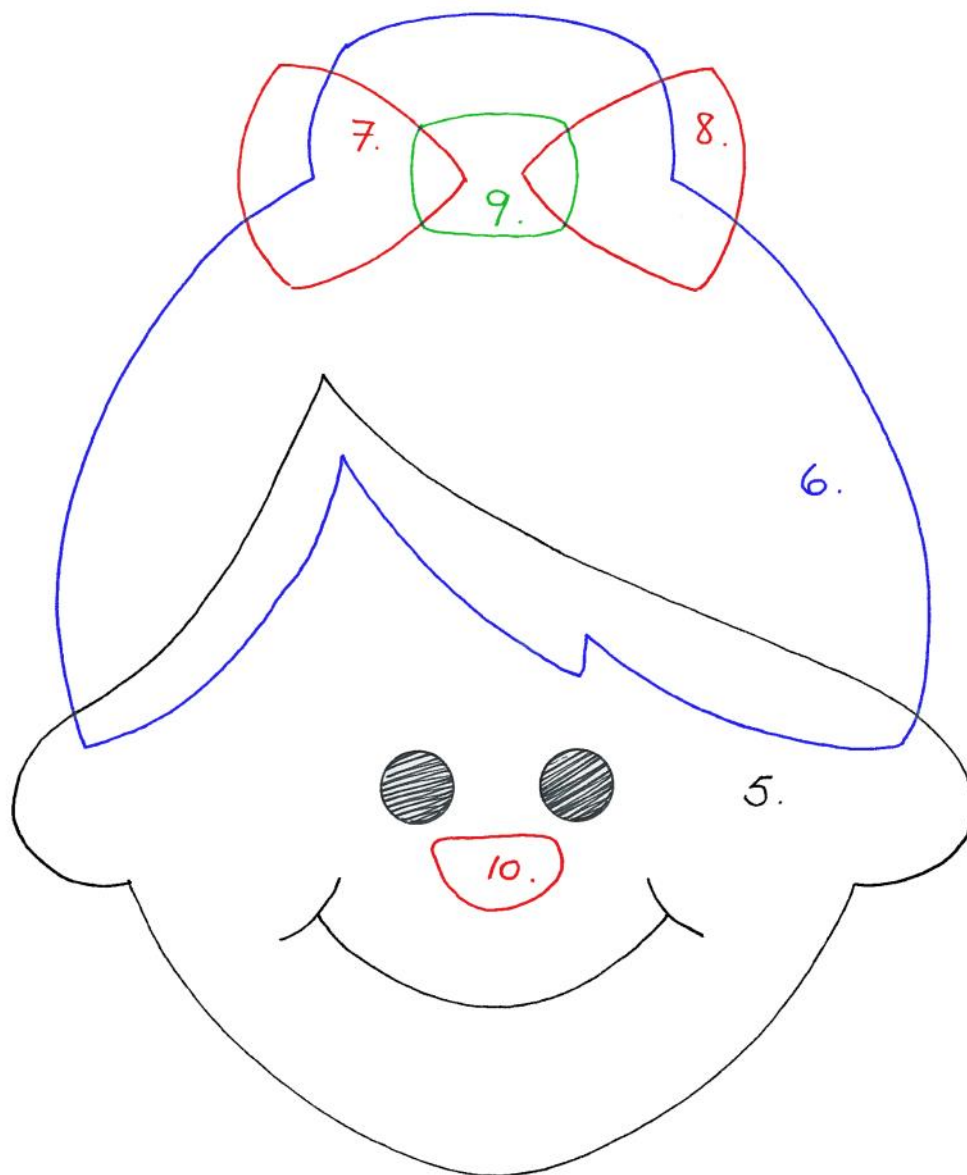
© Antonie Alexander, The Red Boot Quilt Company 2019

- This template can be used on the "Here Comes Santa Claus" Santa Sack pattern and the "Mr & Mrs Claus Apron" pattern.
- You can use the Summer Santa from the Santa Sack pattern on the aprons. Always check the sizes of the templates before you use them on different patterns.
- Overlap the three sections (Mrs Claus) by approx. 3/8in. Use the photograph as a guide throughout.
- Stitch the mouth using backstitch and contrasting thread.

### A Note About Buttons

I like to use buttons on my projects but they aren't suitable for children under three (3) years of age due to them being a choking hazard.

Replace buttons with applique or embroidery when you are making the project.



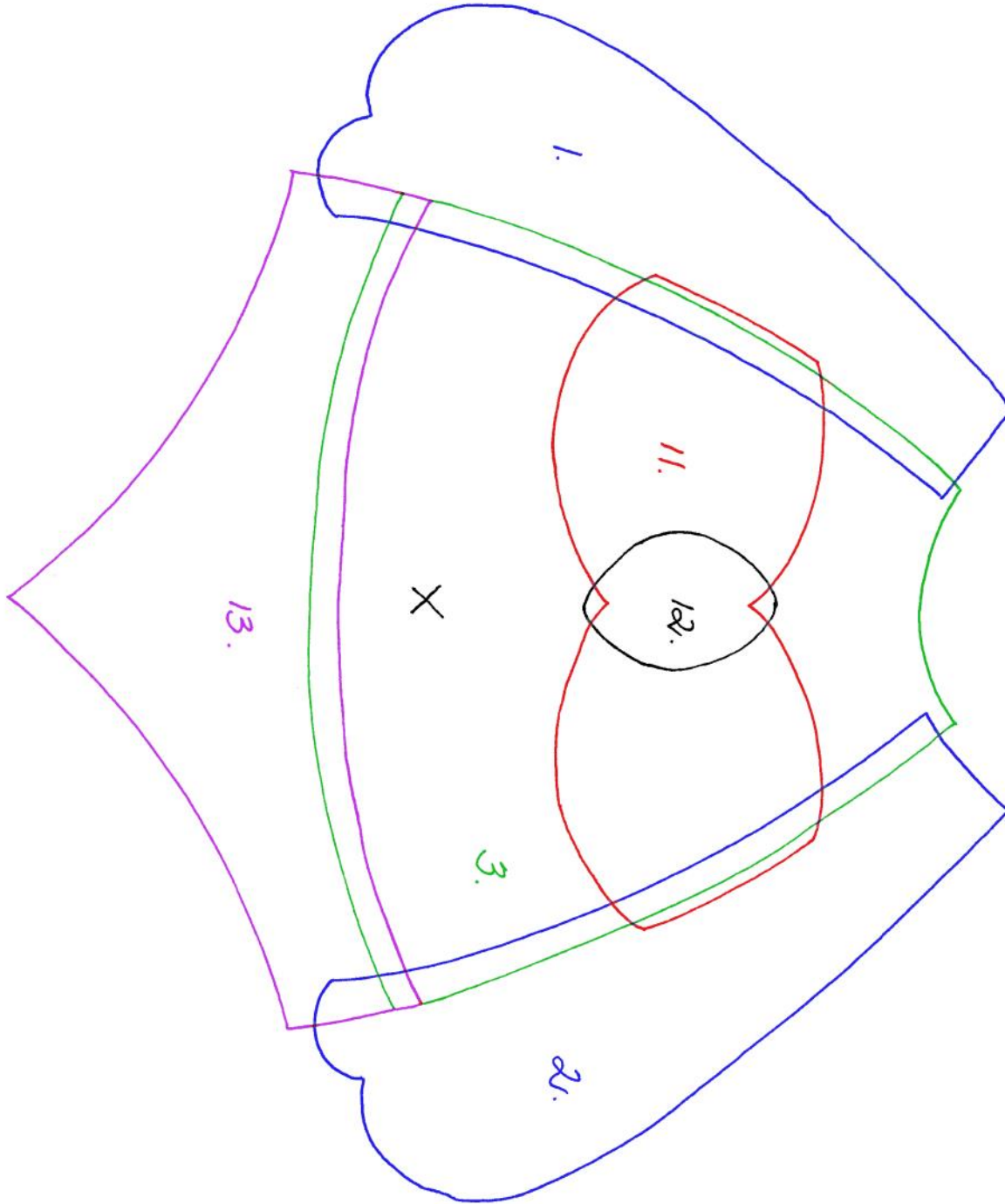
# SUMMER MRS CLAUS

© Antonie Alexander, The Red Boot Quilt Company 2019

- *Stitch the belly button using backstitch and contrasting thread.*

**Tip!**

*The numbers represent the order in which the appliqué shapes are fused together.*





## SUMMER MRS CLAUS

© Antonie Alexander, The Red Boot Quilt Company 2019

- *Stitch the dotted line (on the leg shape) using backstitch and contrasting thread.*
- *Stitch the straps on the thongs using running stitch and contrasting thread.*

### **Tip!**

*Use a lightbox or sunny window to help trace the features on the appliqué shapes before you fuse them to the background block.*

